

JDM Machining, Inc.



11566 County Road 30
Staples, MN 56479

Contact Us:

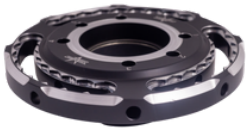
218-894-4638

info@jdmmachininginc.com
www.jdmmachininginc.com

AS9100D Certified

Providing the following services:

- CNC milling for short & long runs
- CNC turning for short & long runs
- Swiss turning for high volume
- Hard turning capabilities
- Surface grinding
- CNC EDM sinker work
- Assistance in design phase
- Prototype work
- Access to other prompt reliable resources
- Blanchard grinding
- Automation



Experienced and knowledgeable in building molds:

- Plastic injection - LIM/LSR - Die cast - Rotational - Rubber injection, transfer & compression molds

CNC EDM's

- Ingersol Gantry 800 CNC Bridge Type Sinker EDM w/tool changer
- Sodick AG60L Sinker EDM (32 place 3R tool changer)
- Sodick VL600Q Wire EDM - Belmont Hole Popper

Swiss Turning

- Citizen L220VIII (20mm bar cap.)
- Citizen L220-X (25mm bar cap.)

Vertical Machining Centers

- Makino F5, 30 tools, 20000 RPM
- (2) Matsuura MX-520 5-Axis CNC Mill w/pallet changer, 90 tools, 20000 RPM, 24.8" x 22" x 20"
- Matsuura ES-800V 3-Axis CNC Mill w/pallet changer, 40 tools, 12000 RPM, 31.5" x 21.5" x 19"
- Mazak Nexus 700D, 48 tools, 12000 RPM, 60" x 27.5" x 26"
- Mazak Nexus 530C, 60 tools, 15000 RPM, 41.3" x 22" x 20"
- Mazak Nexus 530C - Full 4th Axis, 48 tools, 15000 RPM, 41.3" x 22" x 20"
- Mazak Nexus 510C - Full 4th Axis, 30 tools, 12000 RPM, 41.3" x 22" x 20"
- (2) Mazak Nexus 510C, 30 tools, 12000 RPM, 41.3" x 22" x 20"
- Ares-Seiki, 12 tools, 15000 RPM, 18" x 12" x 12"
- Mazak Vertical Center 500A/5X KY - Full 5-Axis, 30 tools, 12000 RPM, 20" x 20" x 20"

Horizontal Machining Center

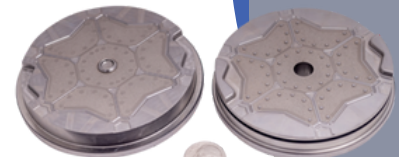
- Makino A51NX Horizontal - 218 tools, 14,000 RPM

Inspection Equipment

- CMM - Coordinate Measuring Machine
- Romer Absolute Arm
- Keyence Instant Measurement System
- MicroVu Optical Measuring Machine
- Rockwell Tester
- Profilometer
- Scionscope Microscope
- Height gauges & all necessary calibrated insp. tools

CNC Turning

- Miyano BNE-51MSY (2 turret), 2" bar
- Miyano BNX-51MSY (1 turret), 2" bar
- Mazak Quick Turn 250 MSY, 3" bar
- Mazak Quick Turn 250 MY 40", 3" bar
- Mazak Quick Turn Nexus 200, 8" chuck
- Mazak Quick Turn Nexus-2 200, 8" chuck



Other Machines

- TungYu Double Station 500 Ton Press
- Sharp & Bridgeport Manual Mill
- Enco Big Bore Eng. Lathe w/digital readout 20" x 80"
- Hyd-Mech Horizontal Band Saw S20
- Dake Cold Saw
- Carlton Radial Drill
- 18" x 36" Blanchard Grinder
- Okamoto 6" x 12" Surface Grinder
- Okamoto 6" x 18" Surface Grinder
- Okamoto 12" x 24" Surface Grinder
- Deckel Tool Cutter Grinder
- Tig Welder
- CNC Plasma Table
- 50W Fiber Laser Marking Machine
- 30W Fiber Laser Marking Machine
- Sandblasters x3
- Heat Treat Oven 12"H x 12"W x 18"L
- (2) 300DB MR Deburr Tumblers

